

ALUMINUM ELECTROLYTIC CAPACITOR - DATA SHEET

Screw Terminal

B43310

85°C / 2000 h

For uninterruptible power supplies
and frequency converters

Part No.: B43310J9109M

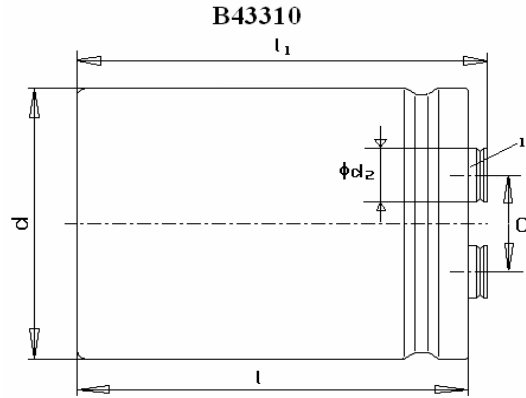
C_R / V_R : 10000 μ F 400V

Case size:

$d+0/-0.8$ (mm) $l+3/-0$ (mm) $l_1+3/-0$ (mm)
91 130 136.5

Drawing No.: C61010X 7504A09

Customer:



1) $d < 65$, M5; $75 < d < 91$, M6

d	51.6	64.3	76.9	91
α	$+0.2$ -0.4	22.2	28.5	31.7
d_2^{max}	11.4	13.2	17.7	17.7

TECHNICAL DATA:

Rated Capacitance C_R (120Hz, 25°C)	10000 μ F
Capacitance Tolerance (120Hz, 25°C)	-20% / +20%
Rated Voltage V_R	400 V
Surge Voltage V_S	450 V
Operating Temperature Range	-25°C/ +85 °C
Max. Leakage Current I_{leak} (5 min, 25°C)	5 mA
Max. $\tan \delta$ (120 Hz, 25°C)	0.2
Typical ESR (120 Hz, 25°C)	15 m Ω
Max. ESR (120 Hz, 25°C)	28 m Ω
Rated Ripple Current $I_{AC,R}$ (120 Hz, 85 °C)	17 A
Max. Ripple Current $I_{AC,max}$ (120 Hz, 40°C)	45.2 A
Load life (85 °C, V_R , $I_{AC,R}$)	2000 h After test: $\Delta C/C \leq \pm 15\%$ of initial value $\tan \delta \leq 1,75 \times$ spec. value $I_{leak} \leq$ initial spec. value
Useful life (45°C, $2 \times I_{AC,R}$, V_R)	42000 h
Useful life (65°C, $2 \times I_{AC,R}$, V_R)	7000 h
Other Specifications	IEC 60384-4, CECC 30 30-810, Series datasheet B43310/330

Edition

1

Date

Jun/06/2008

Sign

Li/Chen
