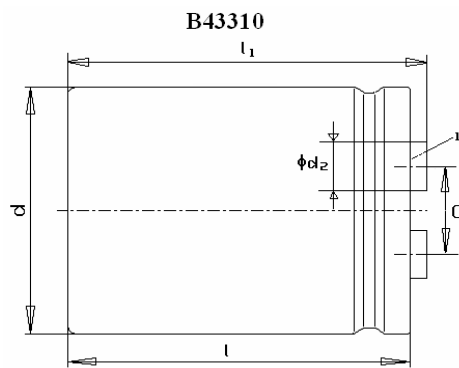


**Screw Terminal**
**B43310**
**85°C / 2000 h**
**For uninterruptible power supplies  
and frequency converters**
**Part No.:** **B43310B9338M000**
**Development NO.:** B43310XM0000338

**C<sub>R</sub> / V<sub>R</sub>:**            **3300µF**            **400V**
**Case size:**
**d+0/-0.8 (mm)**    **l<sub>1</sub>+3/-0 (mm)**            **l<sub>1</sub>+3/-0(mm)**
**64.3**            **105**            **111.5**

Diameter of sc: **M5**
**Drawing No.:**    **C61010X 7502A07**
**Customer:**

**TECHNICAL DATA:**

<b>Rated Capacitance C<sub>R</sub> (120Hz, 25°C)</b>	<b>3300 µF</b>
<b>Capacitance Tolerance (120Hz, 25°C)</b>	<b>-20% /+ 20%</b>
<b>Rated Voltage V<sub>R</sub></b>	<b>400 V</b>
<b>Surge Voltage V<sub>S</sub></b>	<b>450 V</b>
<b>Operating Temperature Range</b>	<b>-25°C/ +85 °C</b>
<b>Max. Leakage Current I<sub>leak</sub> (5 min, 25°C)</b>	<b>5 mA</b>
<b>Max. tan δ (120 Hz, 25°C)</b>	<b>0.2</b>
<b>Typical ESR (120 Hz, 25°C)</b>	<b>44.6 mΩ</b>
<b>Max. ESR (120 Hz, 25°C)</b>	<b>82.5 mΩ</b>
<b>Rated Ripple Current I<sub>AC,R</sub> (120 Hz, 85 °C)</b>	<b>8.3 A</b>
<b>Max. Ripple Current I<sub>AC,max</sub> (120 Hz, 40°C)</b>	<b>22.1 A</b>
<b>Load life (85 °C, V<sub>R</sub>, I<sub>AC,R</sub>)</b>	<b>2000 h</b> After test: ΔC/C: ≤ ±15 % of initial value tan δ : ≤ 1,75x spec. value I <sub>leak</sub> : ≤ initial spec. value
<b>Useful life (45°C, 2 x I<sub>AC,R</sub>, V<sub>R</sub>)</b>	<b>42000 h</b>
<b>Useful life (65°C, 2 x I<sub>AC,R</sub>, V<sub>R</sub>)</b>	<b>7000 h</b>
<b>Other Specifications</b>	IEC 60384-4, CECC 30 30-810, Series datasheet B43310/330

**Edition**

1

**Date**

01/12/2009

**Sign**

KO XM TC PD

Ark-on Li